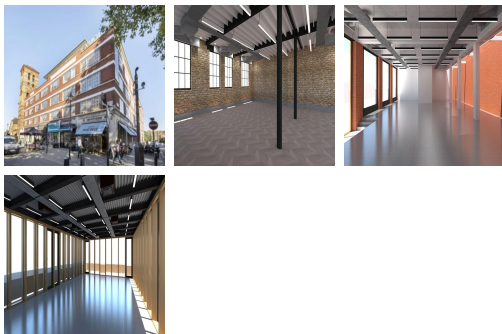


Serviced Office Space UK

25-37 Easton Street

London WC1X 0DS



This listing features excellent office space in a vibrant area, full of creative and innovative companies. The office space has excellent connections to public transport services, Farringdon Station is a ten minute walk and Angel Underground Station is a twelve minute walk. Kings Cross Station is a fifteen minute walk from the office space, providing frequent services nationwide. Exmouth Market is within easy reach of the work centre, here you can find a huge section of independent eateries and street food.

This listing offers high quality office space, situated in a former printing ink factory, in the heart of Clerkenwell. The building has been renovated to produce 37 beautiful offices and studios. The office space available ranges in size from 174 sq ft to 3,403 sq ft, suitable for anything between 2-75 persons. Some of the office units have floor to ceiling windows, allowing an abundance of natural light flow into the work space. Other features include exposed brickwork, high ceilings and access to private terraces. Tenants can also benefit from 24 hour access, CCTV surveillance, showers and bike racks.

transport links

| | |
|----------------------|--------------------------|
| Underground | Angel |
| Train Station | St Pancras International |
| Road Link | N/A |
| Airport | London City Airport |

Leased Spaces

- **Price** : Â£6 pcm
- **Min Price** : Â£6 pcm
- **Min Size** : 4 sq ft
- **Max Size** : 22 sq ft
- **Total Size** : 2452 sq ft
- **Min Term** : 24 mnths