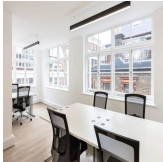
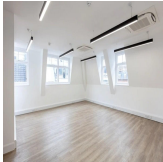


Serviced Office Space UK

9-11 Broadwick Street

London W1F 0DB



The business centre is located right at the heart of Soho. Tenants will experience all of the buzzes of the area coupled with a great working location, surrounded by excellent transport links and a wide range of eateries and bars. Oxford Circus underground station is just a six-minute walk away and is served by the Bakerloo, Central, and Victoria lines. Tottenham Court Road is also around six minutes on foot and offers access to both the Central and Northern lines. The centre is also close to the Soho Theatre and Soho Square Gardens.

This business centre is situated in a highly sought-after area of Central London. The centre offers high-quality office accommodation. It is located within easy reach of excellent public transport connections and fantastic local amenities. The building has recently been refurbished to offer workspaces of high specification. The building is positioned on the corner of the street, allowing plenty of natural light to flood into the workspace. It offers six private offices, all varying in size to suit the needs of different-sized teams. The workspace is pet friendly, so the clients can bring their furry friends to work.

transport links

Underground Train Station	Tottenham Court Road Piccadilly Circus Station
Road Link	N/A
Airport	London City Airport

Serviced Offices

- **Price** : Â£488 pcm
- **Min Price** : Â£488 pcm
- **Min Size** : 4 wkstns
- **Max Size** : 14 wkstns
- **Total Size** : 47 wkstns
- **Min Term** : 3 mnths
- **Max Term** : 36 mnths