

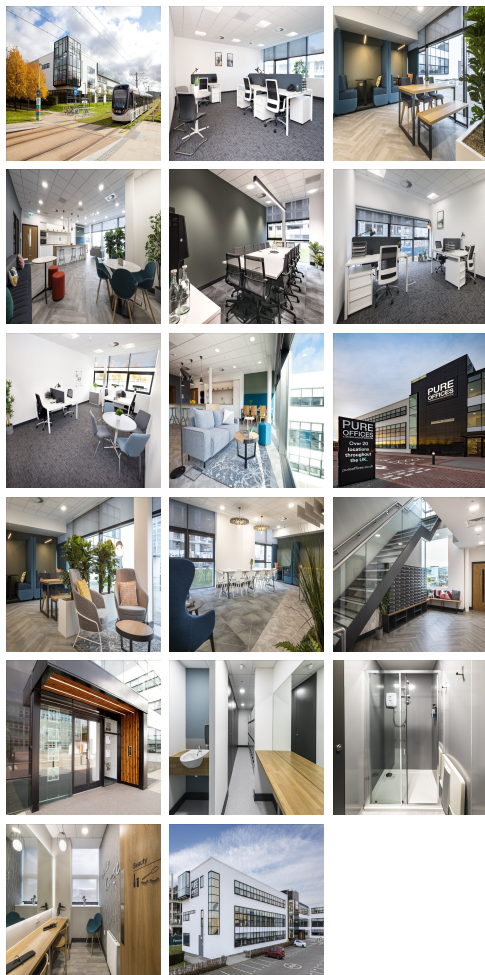
# Serviced Office Space UK

## 4-5 Lochside Way

Edinburgh EH12 9DT



This centre is located in the heart of Edinburgh, placing tenants and their teams in a well-connected and easily accessible location. The centre is within easy reach of excellent public transport connections and great local amenities. Edinburgh Park Train Station is a short seven-minute walk away from the office space, making the work centre accessible for commuters. The building is located just off The City of Edinburgh Bypass, and the City Centre can be reached in under 20 minutes. The work centre is within walking distance of Tesco Superstore, several banks and retail shops.



This listing offers stylish and contemporary office accommodation, ideally located in Edinburgh. The available office suites are unfurnished, allowing clients to move in and make it their own immediately. The work centre has many fantastic amenities, including 24-hour access, meeting rooms for clients and on-site car parking. There is friendly on-site management available to support clients with their business needs. A selection of office sizes is available, suitable for anywhere up to 30 persons. The rent is inclusive of utilities and gigabit-capable broadband. This building is a wonderland for all things digital – providing an ever-expanding hub of creatives with never-ending networking opportunities.

### transport links

<b>Underground</b>	N/A
<b>Train Station</b>	Edinburgh Park
<b>Road Link</b>	N/A
<b>Airport</b>	Edinburgh Airport

### Serviced Offices

- **Price** : Â£480 pcm
- **Min Price** : Â£480 pcm
- **Min Size** : 1 wkstns
- **Max Size** : 1 wkstns
- **Total Size** : 30 wkstns
- **Min Term** : 3 mnths
- **Max Term** : 36 mnths