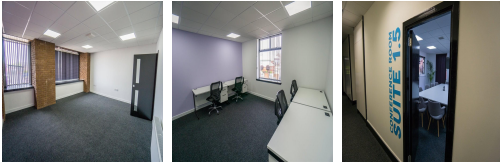


# Serviced Office Space UK

---

## Fullarton Road

Glasgow G32 8YL



This newly refurbished business centre is ideally located within 15 minutes of Glasgow City Centre, at the adjacent junction 2A of the M74, offering great access to the motorway network, which makes this space an ideal hub for any businesses. The nearest bus stop, Clyde Workshops, is located just two minutes away on foot. Clients can hop on the 364 bus services here. Carmyle train station is located within walking distance and can be reached within just four minutes by car. Allocated private parking spaces are available for those driving to work.

The facility offers a full range of office, business and storage services. This centre is a great space that has been designed to meet the demands of any modern business. Tenants will also have access to the kitchen and conferencing facilities. The office suites are fully secure, requiring fob access to advance beyond the main reception, while 24/7 CCTV monitors the property at all times. This business centre provides a high-speed internet connection, security, beverages, central heating, IT support, reception services, parking, on-site support staff, professional-grade cleaning services, and much more.

### transport links

<b>Underground</b>	N/A
<b>Train Station</b>	Queen Street
<b>Road Link</b>	N/A
<b>Airport</b>	Glasgow Airport

### Serviced Offices

---

- **Price** : Â£150 pcm
- **Min Price** : Â£150 pcm
- **Min Term** : 1 mnths
- **Max Term** : 12 mnths