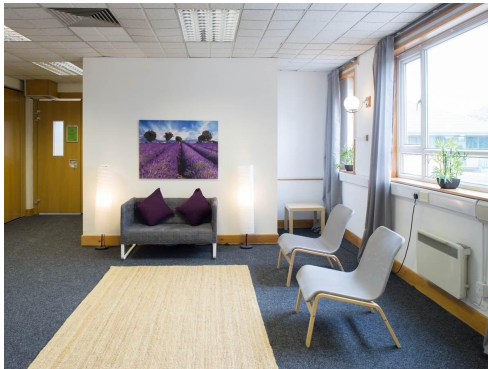


Serviced Office Space UK

3 Roseland Hall

Grangemouth FK3 8WJ



Based in Grangemouth, Falkirk, this property is on the south side of the Firth of Forth. It is situated around four miles from Falkirk, 20 miles from Stirling, and 23 miles from Edinburgh. The centre is just a stone's throw from the M9, which links tenants to Edinburgh and the M8, which leads to Glasgow. Both Edinburgh and Glasgow are around a 45-minute drive from the centre. Falkirk Grahamston rail station is only a 10-minute drive, offering direct access to Edinburgh Waverley station. Falkirk's bustling town centre is also just a short drive away, allowing tenants to benefit from its numerous eateries, bars and shops.

Housed in a beautifully refurbished art deco building, this centre offers a varied selection of offices, available unfurnished and on flexible terms. The centre offers an exciting proposition for both young businesses and more established companies looking for modern space in the Falkirk area. The building features dedicated meeting and conference rooms equipped with WiFi, projectors, whiteboards and stationery. There is also disabled access/parking, a customer lift, and offices are furnished clean, professionally. Both Edinburgh and Glasgow are around a 45-minute drive from the centre. Falkirk Grahamston rail station is only a 10-minute drive, offering direct access to Edinburgh Waverly station.

transport links

| | |
|----------------------|---------------------|
| Underground | N/A |
| Train Station | Polmont |
| Road Link | N/A |
| Airport | Cumbernauld Airport |

Serviced Offices

- **Price** : Â£780 pcm
- **Min Price** : Â£780 pcm
- **Min Size** : 1 wkstns
- **Max Size** : 1 wkstns
- **Min Term** : 1 mnths
- **Max Term** : 1000 mnths