

Serviced Office Space UK

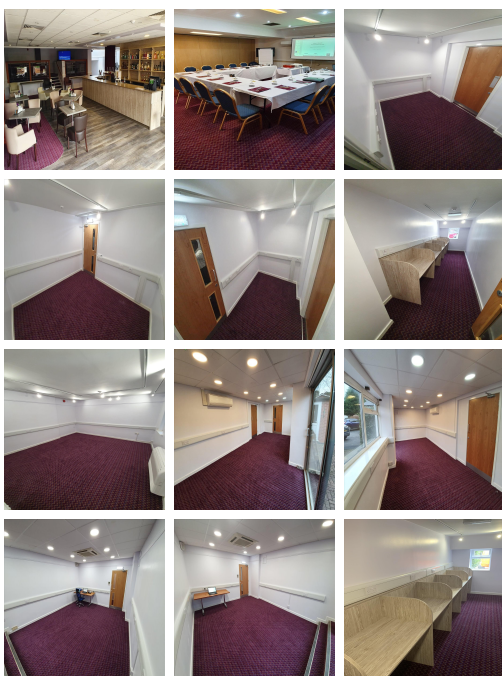
1 Packington Hill

Derby DE74 2DF



The centre is based in Kegworth, in the heart of the East Midlands. Just two minutes from Junction 24 of the M1, the centre is easily accessible for those who drive. If business dictates you fly often, the space is also just five minutes from East Midlands airport. Alternatively, rail options are available from East Midlands Parkway (a ten-minute journey) where tenants have direct access into the Capital. Tenants have a range of dining and retail options close by to take advantage of on lunchtimes. Alternatively, the space is within a 20-minute drive of Nottingham, Derby, Loughborough and Leicester.

Located in the heart of Kegworth, this centre offers a fantastic, modern fully serviced space. The centre puts the tenant at the forefront of their thinking and aims to help you fully maximise your productivity - offering a workspace to compliment that. The space comes furnished and units are available in a range of sizes. All rooms boast air conditioning and 24-hour access. The centre's meeting rooms are designed to a high specification, with up-to-date communication tools, white boards, flexible lighting and additional presentation screens. Other amenities include breakout areas, central heating and printing facilities.



transport links

Underground	N/A
Train Station	East Midlands Parkway
Road Link	N/A
Airport	East Midlands Airport

Coworking Spaces

- **Price** : Â£150 pcm
- **Min Price** : Â£150 pcm
- **Total Size** : 24 wkstns
- **Min Term** : 3 mnths
- **Max Term** : 1000 mnths