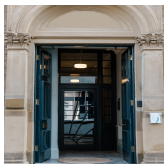
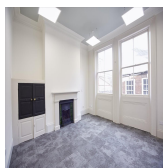
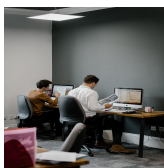
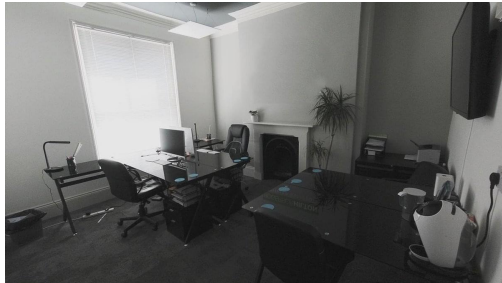


Serviced Office Space UK

Hull HU1 1PS



Situated on High Street, at the corner of Scale Lane Staith within the City's Old Town and in close proximity to the Museum Quarter. The building is conveniently located on the River's edge, just a stone's throw away from Trinity Market, Hull Marina, Humber Street and all of the areas cultural hot spots. A number of pubs are located on the doorstep of the building, perfect for a pint after work. Liberty Lane bus stop is located just two-minutes away on foot. Private Car Parking is available for £15 a week per space (£2.14 a day) and is located just moments away from the office.

This office space comprises an impressive 22 units spanning over three-floors and is the ideal location for any business to house their modern offices. Each unit includes beautiful original features such as historic fireplaces, high ceilings and original coving. This space also features two large communal kitchen areas, plus your own tea point in each studio. In addition, at this location members have access to a greenhouse meeting room, an impressive break-out area, and bike storage and showering facilities. Each studio is unique in its own right, however, all units have Cat6 data cabling, LED lighting, high-speed internet, security alarm and designer finishes.

transport links

Underground	N/A
Train Station	First Hull Trains
Road Link	N/A
Airport	Hull Royal Infirmary Helipad

Leased Spaces

- **Total Size** : 3272 sq ft
- **Min Term** : 12 mnths
- **Max Term** : 72 mnths