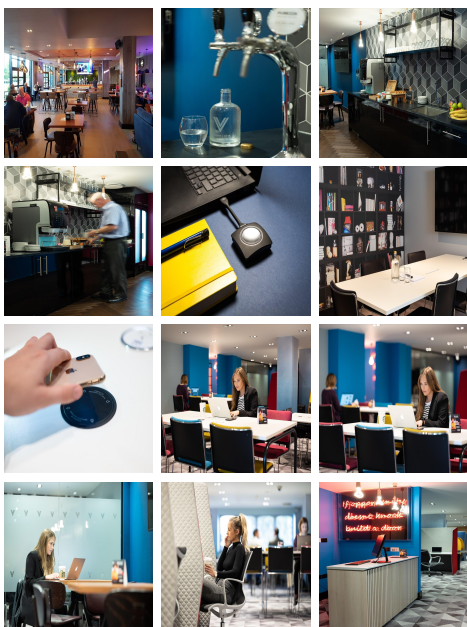


Serviced Office Space UK

Dog Kennel Lane

Solihull (UK) B90 4JG



This location in Solihull is just off the A34, one of the main roads into the city, and well connected to the M42 and M40, meaning you're just a short drive from historic towns like Stratford-upon-Avon, Warwick and Leamington Spa. Solihull offers a great combination of urban sophistication and rural tranquillity. This Solihull co-working space is located in peaceful surroundings, yet less than ten-miles from Birmingham city centre. As 'England's second city', Birmingham it's a place to keep you productive working from here. Ample on-site parking is available for your convenience. The nearest bus stop can be reached in under five-minutes on foot.

This fantastic co-working space stands tall against the competition. At this sleek, stylish office space members have access to a range of state-of-the-art amenities. You will have access to flexible desks, phone booths, private meeting pods, and breakout areas. Business essentials such as business-class printers and receptions services are, of course, included as standard. Much more than your conventional co-working space, this location also includes ultra-modern leisure and gym facilities. Wellness of members is paramount at this location. Take a dip in the heated pool. Squeeze in a workout before or after work. You can also enjoy business lunches at the on-site Pub & Grill. In addition, free-flowing tea and coffee is available to keep you caffeinated and hydrated throughout the working day. This space allows you to strike the perfect work life balance. Every detail has been considered so that you can focus on what matters: your business.

transport links

| | |
|----------------------|-------------------------|
| Underground | N/A |
| Train Station | Hall Green |
| Road Link | N/A |
| Airport | Airport Parking Choices |

Coworking Spaces

- **Price** : Â£89 pcm
- **Min Price** : Â£89 pcm
- **Total Size** : 55 wkstns
- **Min Term** : 6 mnths
- **Max Term** : 12 mnths