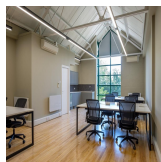
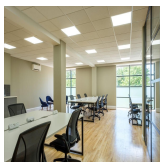
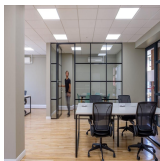
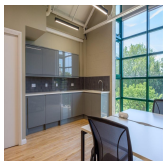
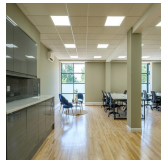
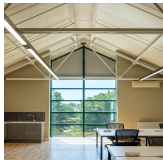
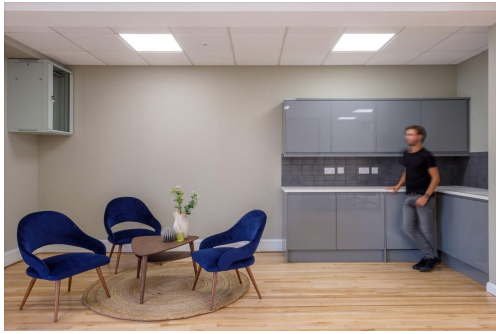


Serviced Office Space UK

King's Road

London SW10 0SZ



Situated in a prime location in London, surrounding the space are many facilities like eateries, where tenants can enjoy a lunch break or an evening of entertaining clients. Commuting to work is also easy. This centre is conveniently located and boasts excellent transport links as well. The surrounding area offers a wide range of eateries and amenities like banks and retail shops, providing tenants with everything at their doorstep. The centre is accessible from almost every transport link, placing tenants and their teams in a well-connected and easily accessible location.

Spacious, fully-furnished offices offer a team somewhere to work comfortably, where members can move in and get started - no need for time wasted setting up various desks. This amenity-rich complex is the perfect location for any business seeking a modern workspace to thrive. This stylish contemporary building has an entrance that makes a statement as the first impression for guests. The workspace is a premium destination for businesses looking for high-end office space with exceptional facilities and services. This state-of-the-art centre provides an excellent platform for any business to flourish with its cost-effective workplace solutions.

transport links

Underground	Fulham Broadway
Train Station	Victoria Station
Road Link	N/A
Airport	London City Airport

Leased Spaces

- **Price** : £5 pcm
- **Min Price** : £5 pcm
- **Min Size** : 10 sq ft
- **Max Size** : 40 sq ft
- **Total Size** : 4982 sq ft
- **Min Term** : 12 mnths
- **Max Term** : 36 mnths