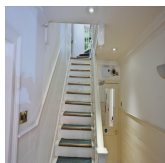
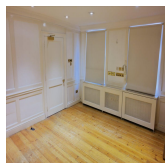
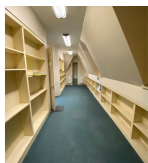


Serviced Office Space UK

30 Romford Road

London E15 4BZ



The workspace is situated in the heart of London, placing tenants and their teams in a well-connected and easily accessible location. This centre is conveniently located, close to central Stratford, and boasts excellent transport links as well. The building is well positioned allowing good vehicular access to and from the City, A12, A406 North Circular Road and Docklands. Stratford Station and bus terminus is within easy walking distance from the centre. Stratford International Station also provides national and European services. Clients can enjoy local eateries serving a variety of cuisines and entertaining their guests.

This centre is a great space that has been designed to meet the demands of any modern business. This centre has all private office and virtual office solutions equipped to cater to all the needs in a community where companies grow together. This business centre offers a wealth of unique features and facilities to benefit the business. The centre provides amenities like fully furnished offices with high-speed internet, parking space, meeting space, parking space, professional-grade cleaning services, IT support and telecom services, and a smoking area. The centre is accessible 24 hours a day so the clients can work flexibly. Many restaurants, cafes, shopping centres, and other local amenities are close to this centre.

transport links

Underground	Stratford
Train Station	Liverpool Street Station
Road Link	N/A
Airport	London City Airport

Virtual Office

- **Price** : Â£20 pcm
- **Min Price** : Â£20 pcm
- **Min Term** : 12 mnths
- **Max Term** : 60 mnths