

Serviced Office Space UK

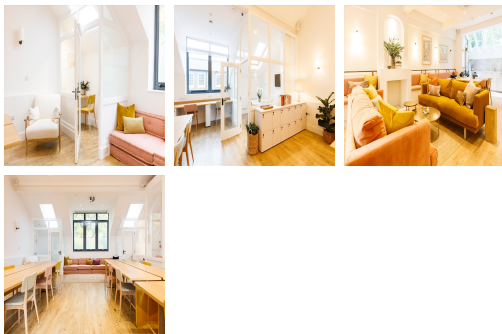
16 Lonsdale Road

London NW6 6RD



The workspace is a coworking and community space located on Lonsdale Road in Queens Park. A well-known, well-loved private commercial mews road, Lonsdale Road is a thoroughfare connecting Kilburn with the Salusbury Primary School and Queens Park. The street has long been home to creative businesses and has several vibrant restaurants and cafes along its stretch. In addition to providing fantastic location and travel solutions, there are other brilliant amenities such as cafes, restaurants, and shopping hubs.

The center is a women's coworking and community space in Queens Park. The workspace is home to a diverse community of local women enjoying full co-working facilities, in-house wellness treatments and therapies, a relaxing evening lounge and cocktail bar, and thoughtfully curated events. With a mix of comfortable seating over two floors and calm surroundings, the space got what members need for a professional and productive experience. Women from all backgrounds, industries, and career stages are welcome. This building is a wonderland for all things digital – providing an ever-expanding hub of creatives with never-ending networking opportunities.



transport links

Underground	Queen's Park
Train Station	St Pancras International
Road Link	N/A
Airport	London City Airport

Coworking Spaces

- **Price** : Â£200 pcm
- **Min Price** : Â£200 pcm
- **Total Size** : 25 wkstns
- **Min Term** : 1 mnths
- **Max Term** : 25 mnths