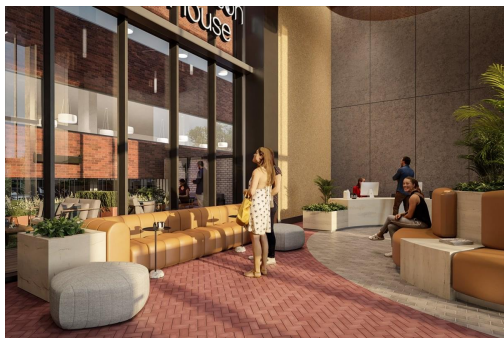


Serviced Office Space UK

Washway Road

Manchester M33 7RR



Sitting right on the southern edge of Greater Manchester, Sale itself is surrounded by glorious countryside, buzzing urban locales and visitor hotspots such as the Trafford Centre. Access to the city's world-leading innovation district is easy straight down the Oxford Road corridor, along with the financial and creative centres beyond, and Manchester Airport is less than 15-minute's-drive away too. So, your business has everything and everyone it needs in easy reach. The centre is surrounded by an array of hotels, restaurants and cafes.

The workspace has been newly refurbished adding lots of extra amenity especially for the tenants. The centre new ground floor cafe and co-working is great to business lunches, informal meetings and guests visiting the building. For fancy booking in for a lunch time spin class, the space onsite Community Manager can help clients book this through the newly launched lifestyle app, Life by the space. Furthermore, to book a meeting room this can be done through the building app where clients can also find out about the cafe's daily special or get a discount for their favourite coffee shop around the corner.

transport links

| | |
|----------------------|-----|
| Underground | N/A |
| Train Station | N/A |
| Road Link | N/A |
| Airport | N/A |

Serviced Offices

- **Price** : Â£280 pcm
- **Min Price** : Â£280 pcm
- **Min Size** : 9 wkstns
- **Max Size** : 16 wkstns
- **Total Size** : 69 wkstns
- **Min Term** : 12 mnths
- **Max Term** : 36 mnths