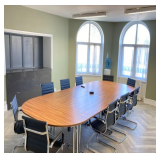
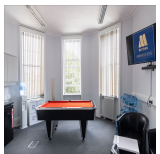
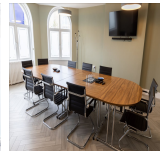


# Serviced Office Space UK

---

## 47 The Terrace

### Gravesend DA12 2DL



Fantastic transport links are available due to the central location of this space with Gravesend Rail Station, just a 15-minute walk with a high-speed connection direct to central London in as little as 25 minutes. The A2 to London or the South coast is a 5-minute drive from the office. This workspace is within a 30-minute drive to central London and 60 minutes from Gatwick airport. Historical landmarks Milton Chantry and New Tavern Fort are set in gardens 11 minutes walk from the office. In addition, parking is available for tenants' convenience. The workspace is 5 minute's walk from Gravesend town centre, offering shops, bars, and restaurants. Gravesend Promenade is a pleasant walk, then visit the Promenade Café for lunch.

The workspace is the best business hub in town within the prestigious setting of the building, a grand Grade II listed building built in 1772. Newly launched offices offer clients a professional and high-quality environment where clients can be part of a vibrant business community with the opportunity to network with a local group of companies. This workspace is where members can create new and exciting ideas, engage with prospective and existing clients, and collaborate with a network of like-minded individuals with a passion for business. Furthermore, the boardroom's modern décor and sleek design provide the perfect platform for communicating their vision.

### transport links

<b>Underground</b>	N/A
<b>Train Station</b>	Gravesend Station
<b>Road Link</b>	A2
<b>Airport</b>	Rochester Airport

### Serviced Offices

---

- **Price** : £497 pcm
- **Min Price** : £497 pcm
- **Min Size** : 3 wkstns
- **Max Size** : 12 wkstns
- **Total Size** : 29 wkstns
- **Min Term** : 6 mnths
- **Max Term** : 12 mnths