

Serviced Office Space UK

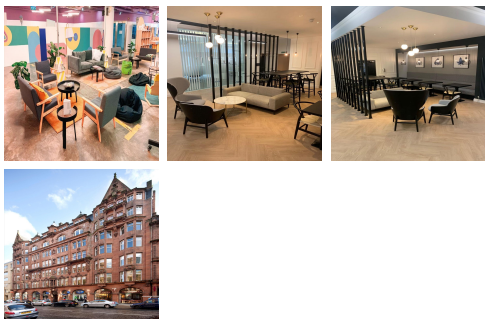
53 Bothwell Street

Glasgow G2 6TS



The workspace is located in Bothwell Street. Exceptionally well connected to Central station, Buchanan Street Subway and numerous bus routes are only minutes' walk away with nearby Waterloo Street offering access to the M18. Landmark location with onsite Commissionaire. There is bike stations and local car parks nearby too. Not forgetting a lovely local pub at the end of the street for tenants to meet after a challenging week. There is parking available at the centre. The centre has also eateries on site and other outlets are very close by.

Forming one of the grand facades on Bothwell Street the Mercantile building offers fully serviced office suites to suit in the heart of Glasgow City centre. Following a comprehensive refurbishment this landmark building offers stylish fully serviced office space with fantastic amenities. The building benefits from meeting rooms/kitchen and break out areas. All offices have access to state-of-the-art IT. In addition, the workspace allows clients to have 24 hours access in 7 days of the week. The Mercantile Building offers a rare combination of a prime Central Business District location whilst having immediate access to a wide range of convenience, retail and coffee shop facilities. Catering for new startups to large corporations we have desks available from 2-150 desks.



transport links

Underground	Buchanan Street SPT Subway Station
Train Station	Glasgow Central Station
Road Link	N/A
Airport	N/A

Serviced Offices

- **Price** : Â£275 pcm
- **Min Price** : Â£275 pcm
- **Min Size** : 2 wkstns
- **Max Size** : 35 wkstns
- **Total Size** : 240 wkstns
- **Min Term** : 3 mnths
- **Max Term** : 60 mnths