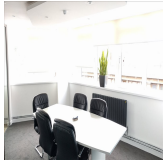


# Serviced Office Space UK

---

## Aspire House

### Derby DE1 1TA



The workspace is located in the heart of Derby city center and have some great restaurants, cafes and pubs. The location couldn't be better for yourself, clients and employees. Local transport links are available within short walking distance. For example, the nearest train station is Derby train station which is 0.6 miles, Motorway junction which is 1.0 miles and the East Midlands airport which is 8.6 miles from the office. Also, on-site parking can be made available which truly enhances the work area.

Situated in the heart of Derby city center and surrounded by some great restaurants, cafes and pubs the location couldn't be better for yourself, clients and employees. Local transport links are available within short walking distance and onsite parking can be made available. Recent refurbishment of this building brings a modern and professional business center to Derby city center while promoting a positive and professional image for the business. Also, there is a great range of options which helps to work better in a suitable environment. For instance: access control, video intercom, accessible entrance and lifts, serviced office or lease options available as well as on-site car parking.

### transport links

<b>Underground</b>	N/A
<b>Train Station</b>	Derby
<b>Road Link</b>	A601
<b>Airport</b>	East Midlands Airport

### Serviced Offices

---

- **Price** : £500 pcm
- **Min Price** : £500 pcm
- **Min Size** : 4 wkstns
- **Max Size** : 150 wkstns
- **Total Size** : 150 wkstns
- **Min Term** : 3 mnths
- **Max Term** : 120 mnths