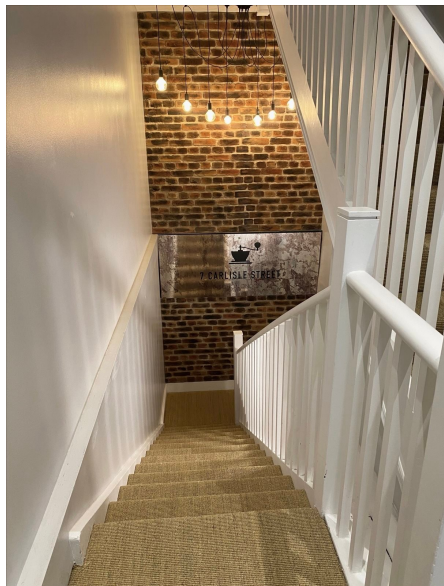


# Serviced Office Space UK

## 7 Carlisle Street

London W1D 3BW



With its prime location in a quiet courtyard street, just off the iconic Soho Square, this attractive period townhouse offers stylish office accommodation for up to 30 people. Tottenham Court Road tube is a three-minute away, offering Central, Northern and Elizabeth line access with a further 4 tube stations, all less than a ten-minute walk away, giving access to the Piccadilly, Bakerloo, and Victoria Lines. The regional transport links are also excellent and provide all prospective tenants with a range of frequent and convenient services throughout the area. The shopping mecca of Oxford Street is on the doorstep, and the property is surrounded by the hundreds of eating, drinking and entertainment venues of Soho.

The location of this Soho townhouse property couldn't be better, located in a quiet mews street, it's a peaceful oasis among the bustle of Soho. It's so close to the Elizabeth Line at Tottenham Court Road, just over a one-minute walk, with a further 4 tube stations all less than a ten-minute walk away, giving access to the Piccadilly, Bakerloo, Central, Northern, Victoria and Elizabeth Lines. Offices are available in a variety of sizes and on flexible terms, with the monthly price including high speed internet access, all utility bills and cleaning. New in 2023 is The Dock Club at 7 Carlisle Street, a spacious and stylish coworking lounge offering hot desks, lounge seating, a meeting snug and a kitchen serving premium hot beverages and soft drinks. Access to this is also included in the monthly fee. In addition there's a fully equipped 6-person meeting room available to hire, with additional meeting facilities just a few minutes walk away at Podium Poland Street. The surrounding area is well renowned for its exceptional range of shopping, eating and entertainment options.



### transport links

<b>Underground</b>	Tottenham Court Road
<b>Train Station</b>	Tottenham Court Road
<b>Road Link</b>	N/A
<b>Airport</b>	London City Airport

### Serviced Offices

- **Price** : Â£417 pcm
- **Min Price** : Â£417 pcm
- **Min Size** : 6 wkstns
- **Max Size** : 30 wkstns
- **Total Size** : 57 wkstns
- **Min Term** : 3 mnths
- **Max Term** : 12 mnths