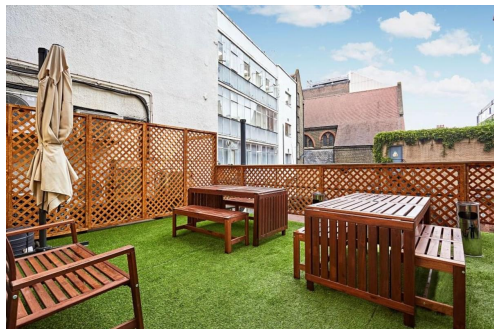


# Serviced Office Space UK

---

## Winchester House

London NW1 5RA



The workspace is located in Marylebone, placing tenants and their teams in a well-connected and easily accessible location. This centre has fantastic transport links. Edgware Road Station and Paddington are just a few minutes away from the centre. Many restaurants, cafes, shopping centres, and other local amenities are close to this centre. Oxford Street, known as Europe's best and busiest shopping street, is just a 10-minute walk away from this workspace. This building is a wonderland for all things digital – providing an ever-expanding hub of creatives with never-ending networking opportunities.

A modern office space that has been designed to meet the demands of the client's modern business. All offices are fully furnished with air conditioning and good natural daylight. Office sizes range from 100 to 2000 square feet and are available for immediate occupancy on flexible teams. The centre has two meeting rooms, a reception area, a choice of furniture styles, a communal kitchen and an outside terrace. In addition, the workspace is accessible 24 hours a day and seven days a week with high-speed internet. There are lounges and large breakout areas where you can take a break during a hectic workday.

### transport links

<b>Underground</b>	Edgware Road
<b>Train Station</b>	London Marylebone
<b>Road Link</b>	N/A
<b>Airport</b>	London City Airport

### Serviced Offices

---

- **Price** : Â£300 pcm
- **Min Price** : Â£300 pcm
- **Min Size** : 1 wkstns
- **Max Size** : 40 wkstns
- **Total Size** : 250 wkstns
- **Min Term** : 1 mnths
- **Max Term** : 36 mnths