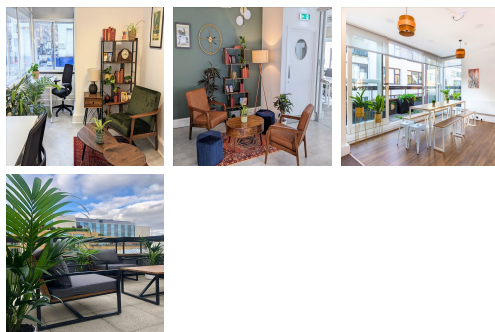


Serviced Office Space UK

London W1U 1JY



This centre is located in the heart of London, placing tenants and their teams in a well-connected and easily accessible location. The space has created stunning design-led flexible workspaces set within Marylebone's quaint, peaceful and charming surround, it's a combination of high-end retailers within and around Selfridges, fine dining and Georgian residential streets that give it a unique atmosphere. Uniquely positioned to give easy access across central London, as well as cities to the west of the capital, and Heathrow. As well as being close to the M4 corridor clients can reach Paddington and Marylebone mainline train stations with a short journey for effortless train journeys to the west.

This centre space is spread over five floors, offering private, brand-new, self-contained offices. Windows all around allow plenty of natural light to flow through, offering thorough airflow and a comfortable working environment. Thoroughly thought-out, design-led space to keep client teams happy. With built-in collaboration spaces, private fully equipped kitchenettes and much more. The offices are plugged and play so there is no hassle when clients check in. This building is a wonderland for all things digital – providing an ever-expanding hub of creatives with never-ending networking opportunities.

transport links

Underground	Bond Street
Train Station	Oxford Circus Underground Station
Road Link	N/A
Airport	London City Airport

Serviced Offices

- **Price** : Â£510 pcm
- **Min Price** : Â£510 pcm
- **Min Size** : 6 wkstns
- **Max Size** : 30 wkstns
- **Total Size** : 108 wkstns
- **Min Term** : 12 mnths
- **Max Term** : 18 mnths