

# Serviced Office Space UK

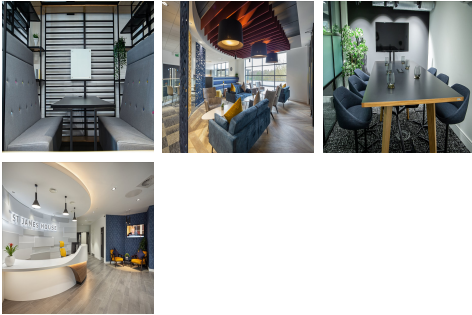
---

## Hollinswood Road

### Telford TF2 9TW



The centre is situated on Hollinswood Road. The business centre is located on Central Business Park, which is 10 mins away from the main M54 through Telford and 5 minutes away from the busy Telford Town Centre—hosting its own 190 space car park with the electric car charging point, bike racks and secure 24/7 access. The closest train station is Telford Central, which offers Wolverhampton, Birmingham, and London routes. There are hotel options in the area, ideal if visitors require accommodation.



St James' House is a 52,000 sqft flexible office; after a recent £8.5M refurbishment, this building offers fully serviced and managed flexible offices, a stone's throw from the M54.

Approximately 50 separate offices over the ground and first floors, totalling 250 desk offices ranging from 2 desk offices to 18 desk offices, with heating and air conditioning controls for each office. Large open plan managed space on the 2nd and 3rd floors, ranging from 1,000 sqft to 9,000 sqft areas of serviced unfurnished office space. Smart access system offering clients 24/7 access, lightning-fast internet capabilities, including next-generation Wi-Fi. Self-controlled air-conditioning and heating in every office. Large conference area, pop in meeting pods, sizeable communal kitchen areas with free of charge refreshments, modern business lounges, large outside terraces and showers.

### transport links

<b>Underground</b>	N/A
<b>Train Station</b>	Telford Central
<b>Road Link</b>	M54
<b>Airport</b>	N/A

### Serviced Offices

---

- **Price** : Â£260 pcm
- **Min Price** : Â£260 pcm
- **Min Size** : 1 wkstns
- **Max Size** : 2 wkstns
- **Total Size** : 260 wkstns
- **Min Term** : 3 mnths
- **Max Term** : 36 mnths