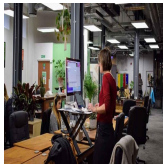
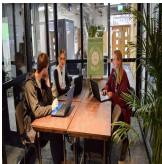


Serviced Office Space UK

1-3 Gloucester Road

Bristol BS7 8AA



This centre is located in the heart of Bristol, placing tenants and their teams in a well-connected and easily accessible location. In the heart of the city, all the members will have easy access to all the best that Bristol has to offer. This centre has fabulous restaurants and onsite cafes to buzzing nightlife, so clients will never be short of something to do. And with excellent transport links, getting around town or further afield is a breeze for the members. There is two-way access to reach this place which is by car or public transport such as train, uber, taxi, and metro bus.

This centre is a great space that has been designed to meet the demands of any modern business. This centre is a carbon-neutral coworking space with a focus on sustainability. This business centre provides super-fast wifi, ample seating in the garden area, and bike storage for members who want to commute by bicycle. In addition, other facilities include a shower facility for when members need to freshen up, unlimited free tea and Clifton roasters coffee to keep the members fueled throughout the day, wheelchair accessibility, and a seated break-out space for a quick break. Plus, this space has a meeting room available for office access.

transport links

Underground	N/A
Train Station	Montpelier
Road Link	N/A
Airport	Bristol Airport

Coworking Spaces

- **Price** : Â£65 pcm
- **Min Price** : Â£65 pcm
- **Total Size** : 50 wkstns
- **Min Term** : 1 mnths
- **Max Term** : 36 mnths