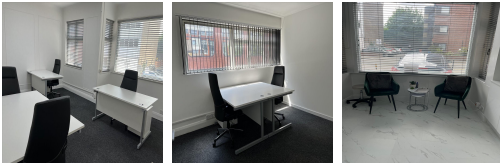


# Serviced Office Space UK

---

## Romford RM1 3NH



This business centre is located within 1 minute walk to Romford Rail station. Served by various arterial roads, this location enjoys TFL bus connections and rail links into London's Liverpool Street which is just a fifteen minutes commute, together with Elizabeth Line services. A12 and M25 is only a few minutes away from this business centre. There are other transportation links as well. For example, train stations like Gidea Park, Upminster, Newbury Park Station, Upney Station and Manor Park and nearest airport like London City Airport are there.

This workspace comes with modern and affordable offices, secure 24-hour access and keyless access, CCTV, mail handling service, parking facility and high-speed dedicated broadband. Small and large offices are available to let in this business centre. The business centre provides premium office accommodation comprising of small, medium and large office space. The centre is stylishly furnished and includes a communal kitchen area. Business facilities are exceptionally well equipped, offering the latest in IT infrastructure bandwidth capability. The serviced offices are also fitted with all the efficient and functional facilities that is needed for any business to thrive.

### transport links

<b>Underground</b>	N/A
<b>Train Station</b>	Gidea Park
<b>Road Link</b>	N/A
<b>Airport</b>	London City Airport

### Serviced Offices

---

- **Price** : Â£385 pcm
- **Min Price** : Â£385 pcm
- **Min Size** : 1 wkstns
- **Max Size** : 4 wkstns
- **Total Size** : 45 wkstns
- **Min Term** : 6 mnths
- **Max Term** : 12 mnths