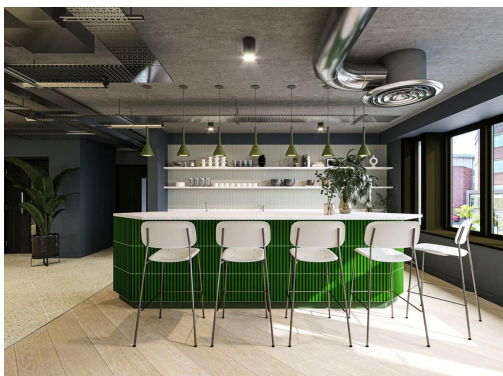
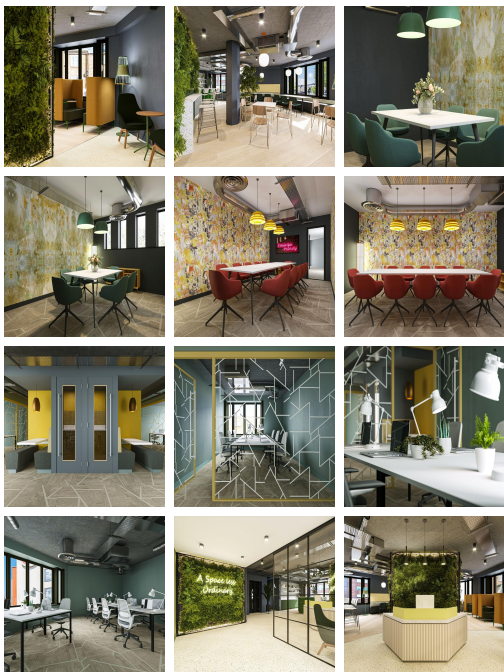


Serviced Office Space UK

London TW9 2NA



The office is exceptionally well-connected to central London and surrounding areas in the heart of Richmond town centre. It's just a two-minute walk from Richmond train station, where train and tube links lead to Waterloo, Westminster, Kingston, Wimbledon, and more. And, with secure bicycle storage and shower facilities on-site, cycling to work from nearby is easier than ever. Heathrow International Airport is approximately a 35-minute drive. The centre also has eateries on site and other outlets close by.



This centre is a great space designed to meet the demands of any modern business. This centre is a newly-refurbished five-storey office building in the heart of Richmond town centre. The centre benefits from ample natural lighting and high-spec features, including sophisticated air-conditioning and super-fast broadband. And with unique breakout spaces, a concierge service, on-site showers, gym facilities, and more available for use by members. This space is warm and welcoming, so clients can feel at home while at work. This building is a wonderland for all things digital – providing an ever-expanding hub of creatives with never-ending networking opportunities.

transport links

Underground	Richmond
Train Station	Kingston Station
Road Link	N/A
Airport	Heathrow Airport

Serviced Offices

- **Price** : Â£485 pcm
- **Min Price** : Â£485 pcm
- **Min Size** : 1 wkstns
- **Max Size** : 100 wkstns
- **Total Size** : 459 wkstns
- **Min Term** : 3 mnths
- **Max Term** : 24 mnths