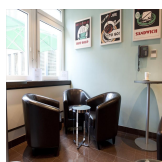


# Serviced Office Space UK

---

## Croydon CR0 4HA



A good location on the outskirts of the Town Centre, only a short walk to local amenities and shopping facilities. A complimentary chauffeur service is in operation from eight AM to six PM to transport staff and customers to and from East Croydon Station as well as to the shopping centres. London City Airport is accessible easily by public transport and offers flights to a variety of destinations. London itself is also within an easy commute, with all of the attractions it has to offer, including some world-famous museums and galleries.

Whether members are an ambitious start-up needing commercial office space or a small office on a short lease, or a more established business looking for a prestigious Croydon business centre with an eye on expansion, this centre is members' first stop for commercial office premises in central Croydon. There are air-conditioned serviced offices to rent for one to 30 people, decorated in smart but understated modern designer style and fully furnished to a standard unrivalled at this price point. Some of serviced offices have private toilet facilities and some offices have spectacular views across the Croydon skyline. And when it the time for a well-earned break or an informal meeting, just pop along to the bistro-style café or stroll around the attractive paved courtyard.

### transport links

<b>Underground</b>	Victoria Station
<b>Train Station</b>	East Croydon
<b>Road Link</b>	M23 jnct 7
<b>Airport</b>	London Biggin Hill Airport

### Serviced Offices

---

- **Price** : Â£199 pcm
- **Min Price** : Â£199 pcm
- **Min Size** : 2 wkstns
- **Max Size** : 100 wkstns
- **Total Size** : 253 wkstns
- **Min Term** : 3 mnths
- **Max Term** : 36 mnths