

# Serviced Office Space UK

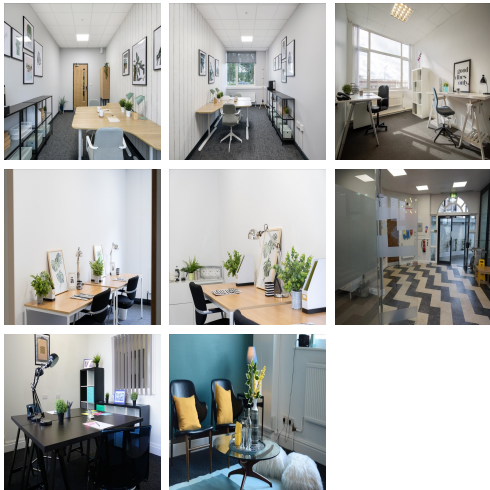
---

## Monsall Road

### Manchester M40 8WN



The workspace is situated in the heart of Manchester, placing tenants and their teams in a well-connected and easily accessible location. The centre is two miles northeast of Central Manchester. Just off the A62 Oldham Road, with the M60 only minutes away. For public transport, Central Park and Monsall tram stops are within a 5-minute walk, and the number 83 bus stops are close to the centre. The nearest railway stations are Dean Lane, 0.9 miles away, and Manchester Victoria, 1.8 miles away. This centre is conveniently located and boasts excellent transport links as well.



This centre is a great space and meets the demands of any modern business. This business centre is the leading workspace provider with multiple office solutions for every business. This business centre provides fully furnished offices with high-speed internet, parking space, meeting space, professional-grade daily cleaning services, IT support and telecom services, and more. This recently refurbished centre provides an excellent platform for any business to flourish with its cost-effective workplace solutions. This building is a wonderland for all things digital - providing an ever-expanding hub of creatives with never-ending networking opportunities.

### transport links

<b>Underground</b>	N/A
<b>Train Station</b>	Metrolink RATP Dev Ltd
<b>Road Link</b>	N/A
<b>Airport</b>	Manchester Airport

### Sublet Office Spaces

---

- **Price** : Â£133 pcm
- **Min Price** : Â£133 pcm
- **Min Size** : 2 wkstns
- **Max Size** : 34 wkstns
- **Total Size** : 1339 wkstns
- **Min Term** : 12 mnths
- **Max Term** : 120 mnths